

# SMART MOVE

Savvy home buyers are flocking to a new green development in Fishtown.

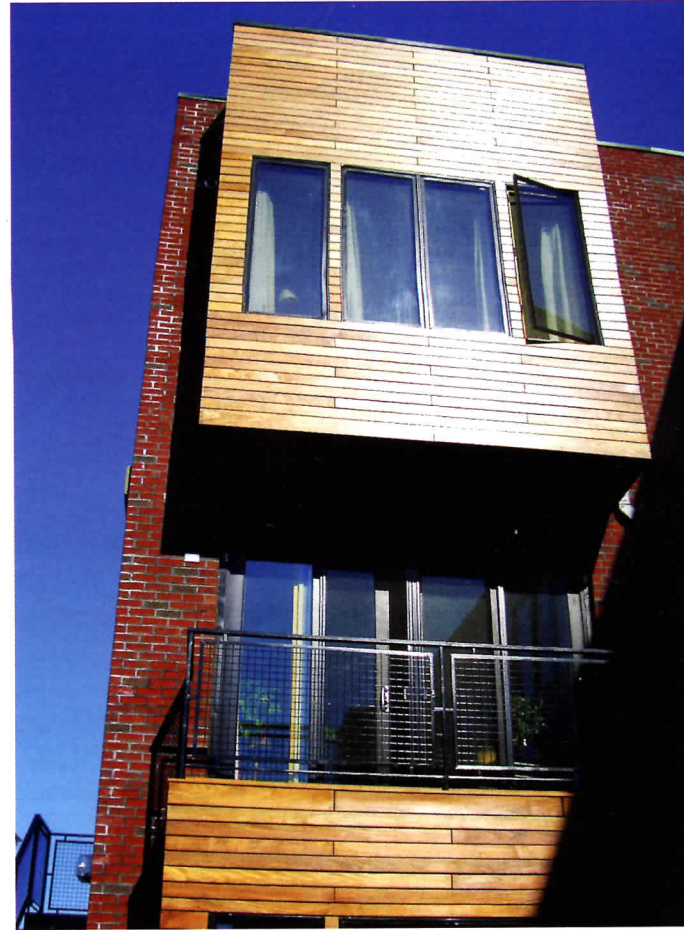
FISHTOWN HAS SOLIDIFIED its reputation as Philly's hottest up-and-coming neighborhood with The IceHouse, a new 26-unit condominium complex situated close to the Delaware River waterfront.



Condos at The IceHouse come complete with luxe finishes, high ceilings and sustainable hardwood flooring. CaesarStone Quartz countertops, glass tile backsplashes and high-end bamboo cabinets give kitchens a modern look. Bathrooms boast European-tile floors, glass tile walls and sleek wall-mounted vanities, and all of the units' high-efficiency appliances come outfitted in stainless steel.

Residents have access to a communal rooftop deck; private green roofs offer bridge and city views. Optional upgrades include a hybrid car hookup, California Closets or a built-in wine cooler.

The building, which is LEED certified, features a rainwater-recycling system, a solar-power system for all common-area electrical needs, a high-efficiency HVAC (heating, ventilating and air conditioning) system and recycled insulation. Pricing starts in the low \$200,000s. *For more information, visit [theicehousedevlopment.com](http://theicehousedevlopment.com).*—LAUREN HERMAN



## September 2010: Get Comfortable in Bed

Only until September 30th, purchase any bed and receive 20% off any accompanying bedroom piece or Pure Latex Bliss luxury bedding.